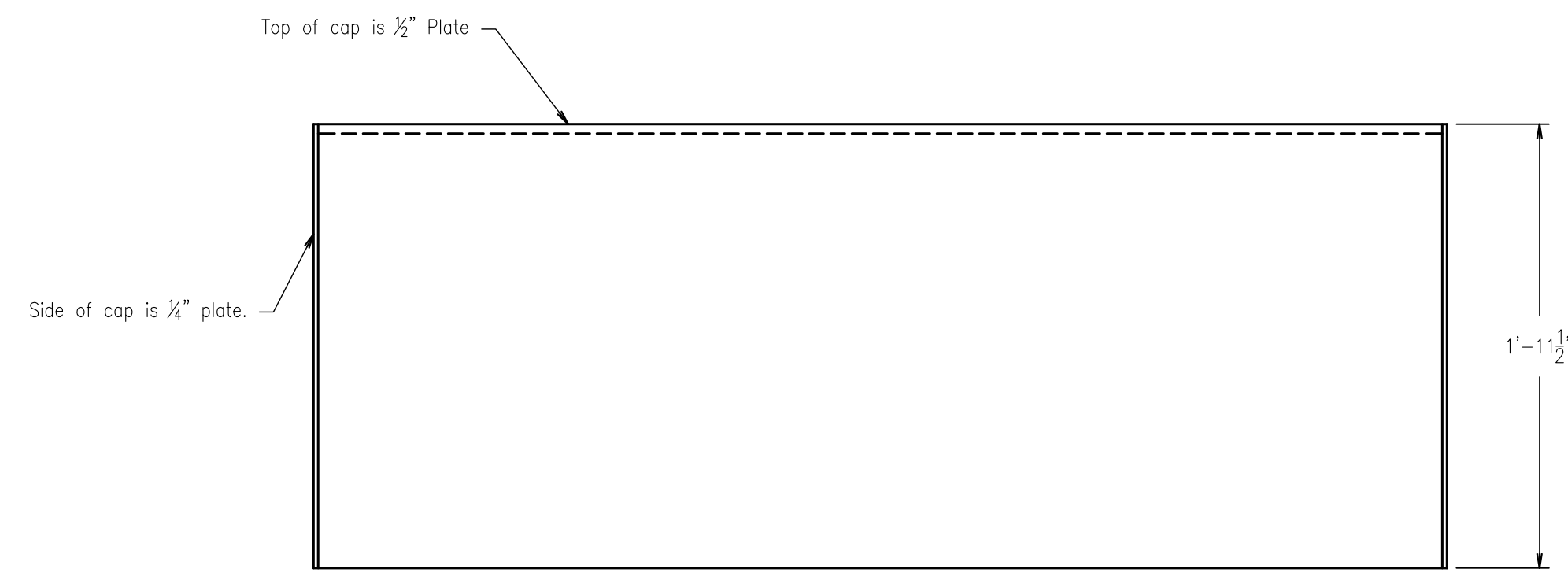


A Cap Plan
 RIG-001 SCALE: 1-1/2"=1'-0"



B Cap Elevation
 RIG-001 SCALE: 1-1/2"=1'-0"

NOTES:

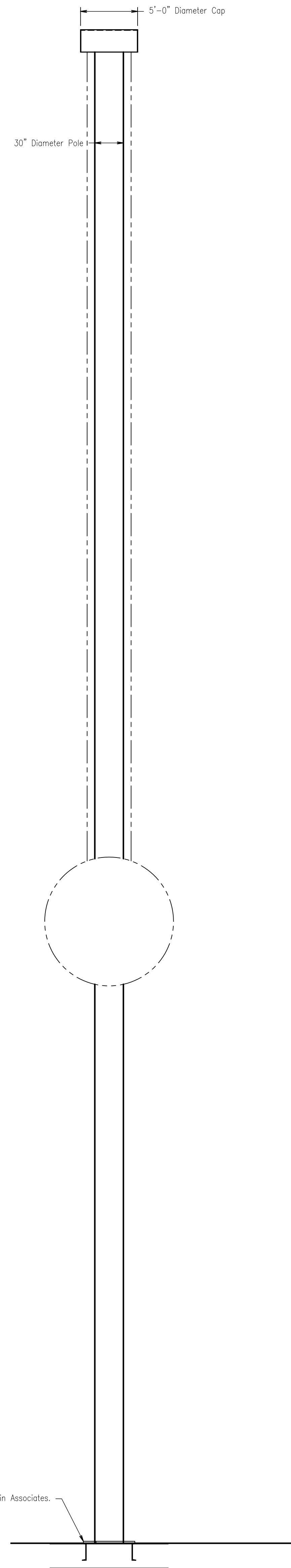
ALL MATERIALS AND SIZES ARE SUGGESTIONS ONLY, FINAL MATERIALS BY ENGINEER.

HUDSON SCENIC STUDIO, INC. (HSS) WILL PROVIDE SHEAVE ASSEMBLY TO BOLT ONTO POLE FLANGE AT TIME OF INSTALLATION.

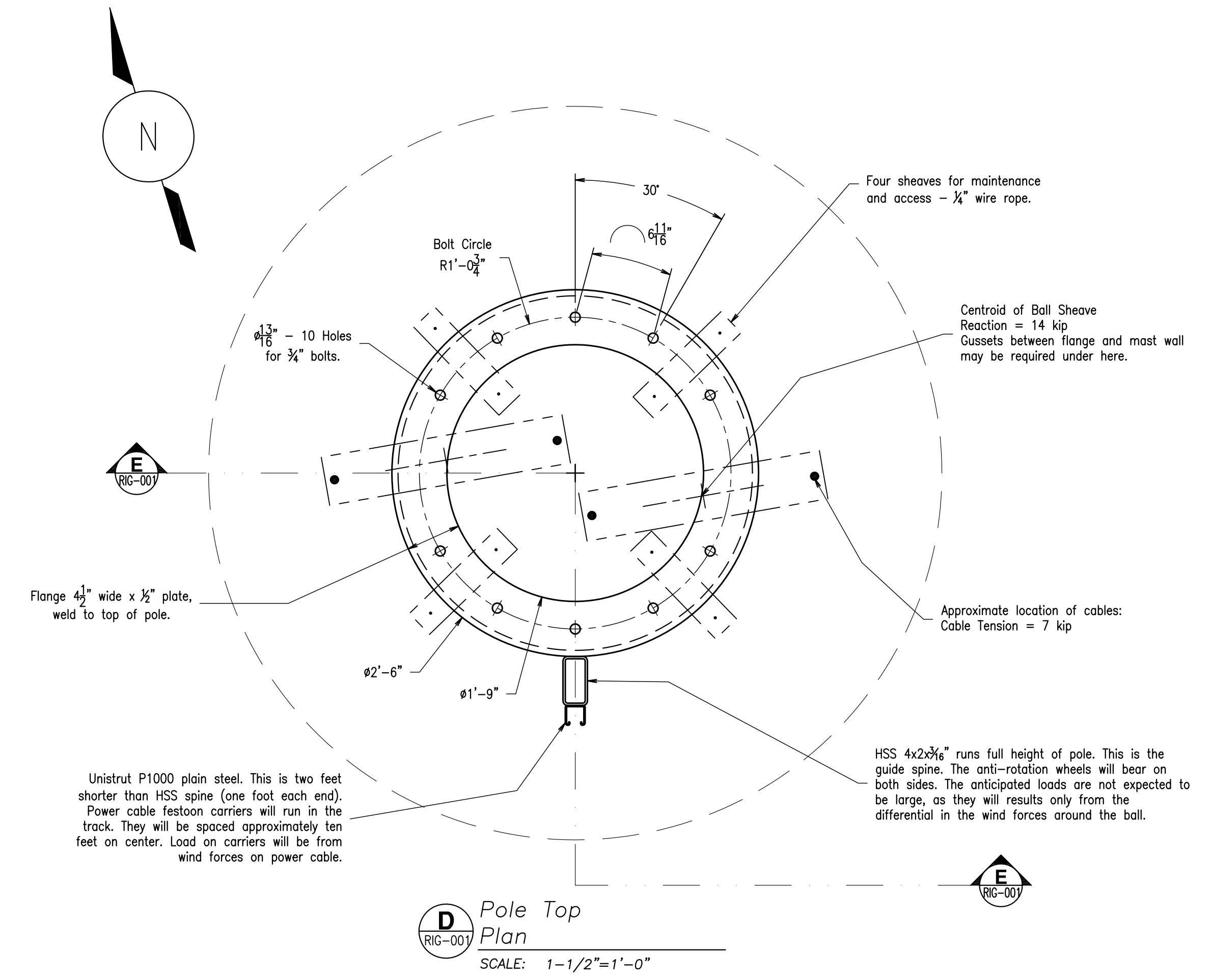
CAP UNIT (BY OTHERS THAN HSS) WILL BOLT ONTO SHEAVE ASSEMBLY AT TIME OF INSTALLATION.

FABRICATION TOLERANCES: $\pm 1/4$ "
 HOLE LOCATION TOLERANCE: $\pm 3/32$ "

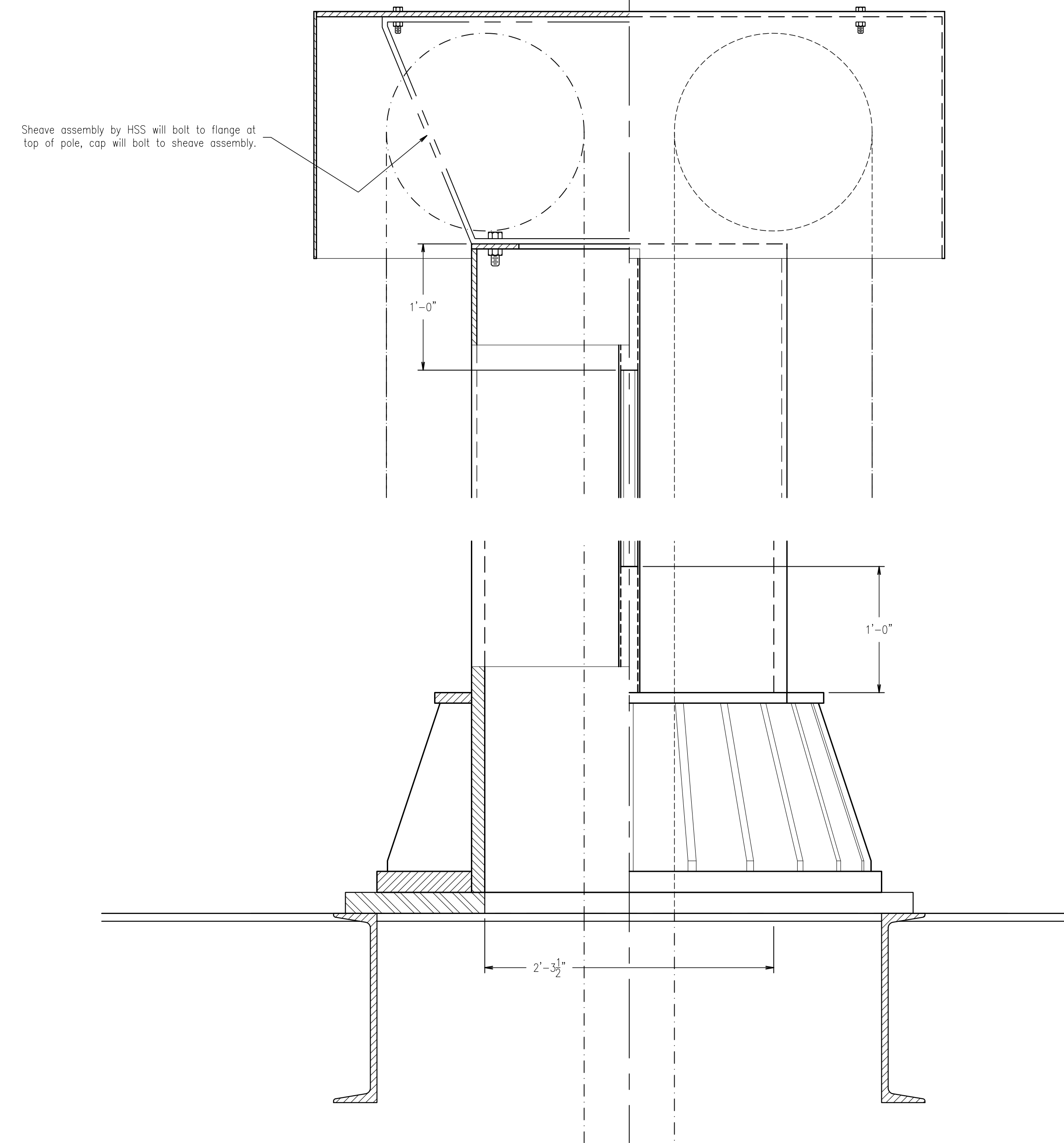
HSS WILL FORWARD DETAILED DRAWINGS OF THE SHEAVE ASSEMBLY IN FUTURE.



C Pole Elevation
 RIG-001 SCALE: None



D Pole Top Plan
 RIG-001 SCALE: 1-1/2"=1'-0"



E Pole Details Section
 RIG-001 SCALE: 1-1/2"=1'-0"

PROPRIETARY INFORMATION
 Information provided in these drawings is proprietary to HUDSON SCENIC STUDIO, INC. These drawings are provided to the subcontractor for use in conjunction with the present production and for no other purpose. The subcontractor agrees that it shall not utilize, duplicate, simulate or copy the construction of the equipment described without obtaining the prior written consent of HUDSON SCENIC STUDIO, INC.



130 Fernbrook St.
 Yonkers, NY 10705
 Fax 914-378-9134
 Ph. 914-375-0900

05/07/08
 05/17/08
 Addition of guide spine and cable management track.
 Modification of frame and presentation.
 Revision Date: Revision Notes:

Job # 2743 Unit # 0200

2008 Times Square Ball
 Rigging
 Pole Cap

Issue Date: 05/05/08

Drawing Series Number: **020000**

Design Ref. Sheet Number: **RIG-001**

Scale: as noted
 Drawn by: EDG/RWB